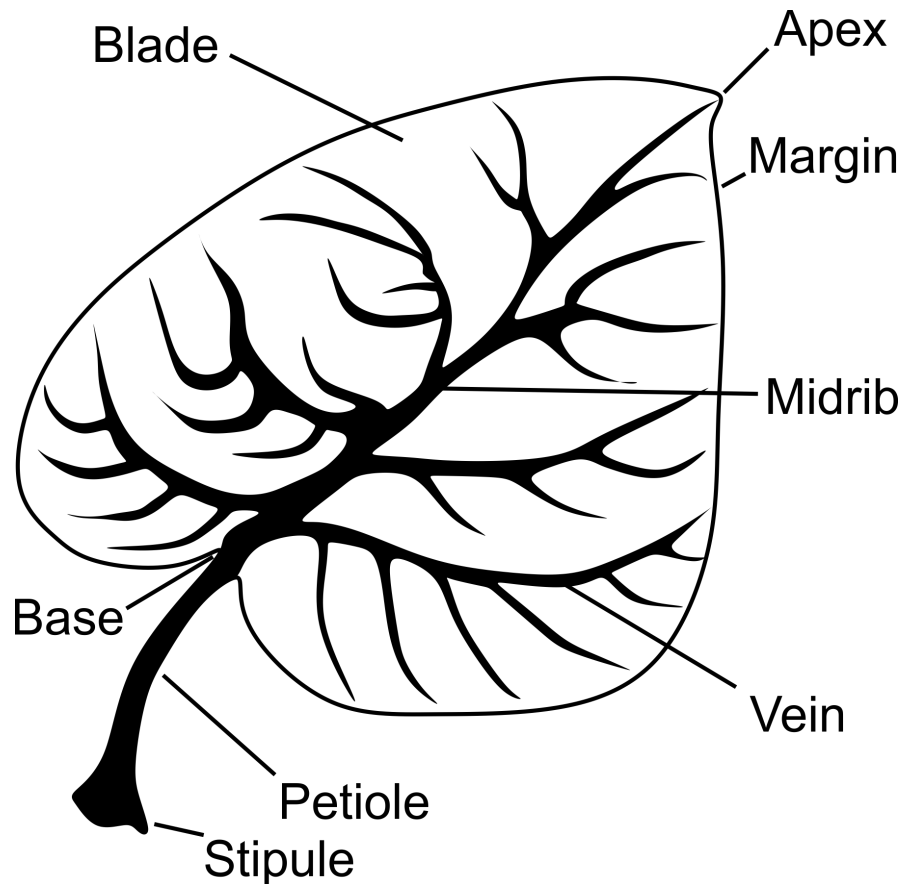


Parts of a Leaf

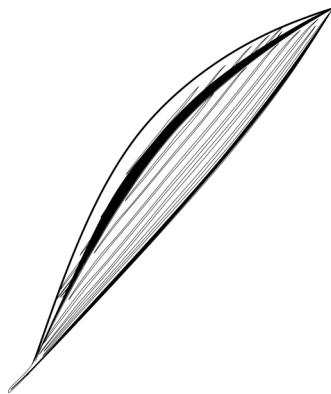


The veins in leaves come in different patterns.

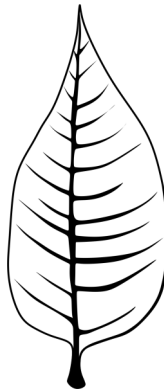
1. Palmate leaves have several main veins that all come from the same point at the base.
2. Parallel leaves have several large veins running from the base to the tip that are connected by small cross veins.
3. Pinnate leaves have a featherlike pattern in the veins.
4. Reticulated venation is a pattern of veins that looks like a net or a web.



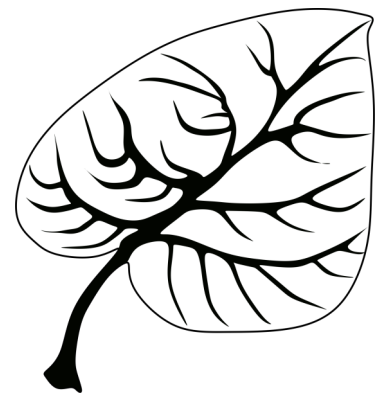
1



2



3



4