


O COME, ALL YE FAITHFUL



Come, all ye faith - ful, joy - ful and tri - um - phant! O

1. What key is the song in? _____
2. What note do you play when playing "all"? _____
3. What types of notes do you play when playing "faith - ful"? _____
4. What types of notes do you play when playing "joy - ful and tri -"? _____



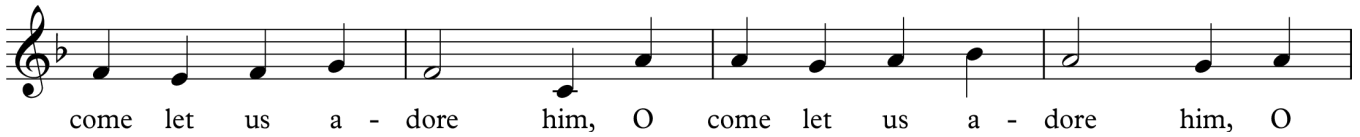
come ye, o come__ ye to Beth - le - hem.

5. What note do you play when you play "ye" in the first measure? _____
6. What note do you play when playing "o"? _____
7. What type of note do you play when playing "le -"? _____
8. What is the symbol at the end of the line of music? _____



Come and be - hold him, born the king of an - gels; O

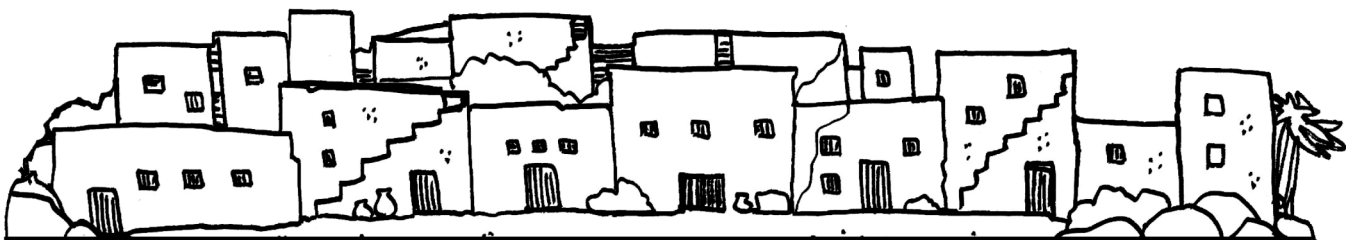
9. What note do you play when playing "Come"? _____
10. What note do you play when playing "- hold"? _____
11. What type of note do you play when playing "king"? _____
12. What note do you play when playing "- gels"? _____



13. What note do you play when playing the same note for "O" and "come" in the second and third measures? _____
14. What note do you play the first time you play "come"? _____
15. What type of note do you play each time you play "- dore"? _____
16. How many quarter notes are on this line of music? _____



17. What is the circled part of the note for "let" called? _____
18. What is the circled part of the note for "the" called? _____
19. What type of note do you play when playing "Lord"? _____
20. What does the bar symbol at the end of the line of music mean? _____



ANGELS WE HAVE HEARD ON HIGH



An - gels we have heard on high, Sweet - ly sing - ing o'er the plains,

1. What key is the song in? _____
2. What is the time signature of the song? _____
3. With this time signature, how many beats are in a measure? _____
4. What does the bottom number in the time signature tell you? _____



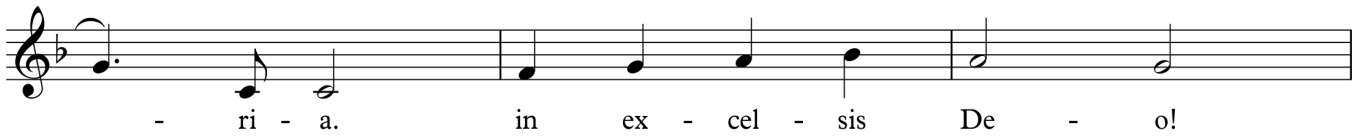
And the moun-tains in re - ply, E - cho - ing their Joy - ous strains.

5. What note do you play when playing "And the" and "moun -"? _____
6. What type of note do you play when playing "in"? _____
7. How many beats are given to the note you play when playing "in" in this line of music? _____
8. What type of note do you play when playing "strains"? _____



Glo - - - - -

9. What note is played when playing "Glo -"? _____
10. What type of note is each note connected by a beam in this line of music? _____
11. How many beats are given to each note connected by a beam in this line of music? _____
12. What note is played when playing the second half note in this line of music? _____



- ri - a. in ex - cel - sis De - o!

13. What type of note is played when playing "ri -"? _____
14. What note is played when playing "- a"? _____
15. How many beats are given to each note you play when playing "in ex - cel - sis" in this song? _____
16. How many half notes are in this line of music? _____



Glo - - - - -


17. What four notes are played when playing the notes connected by the first beam? _____
18. What four notes are played when playing the notes connected by the second beam? _____
19. What four notes are played when playing the notes connected by the third beam? _____
20. How many half notes are played in this line of music? _____



- ri - a. in ex - cel - sis De - - - o!

21. What type of note is the first note in this line of music (it has no words with it)? _____
22. What note do you play when playing "ex -"? _____
23. What note do you play when playing "- sis"? _____
24. What does the double bar at the end of this line of music mean? _____

AWAY IN A MANGER




A - way in a man - ger no crib for a bed. The

1. What key is the song in? _____

2. What is the time signature of the song? _____

3. With this time signature, how many beats are in a measure? _____

4. What does the bottom number in the time signature tell you? _____




lit - tle Lord Je - sus lay down his sweet head. The

5. How many measures are shown in this line of music? _____

6. Which two measures of this line of music have three quarter notes, each getting one beat? _____

7. What note do you play when playing "down"? _____

8. What note do you play when playing "head"? _____



stars in the bright sky look down where He lay. The

9. What type of note do you play when playing "in"? _____

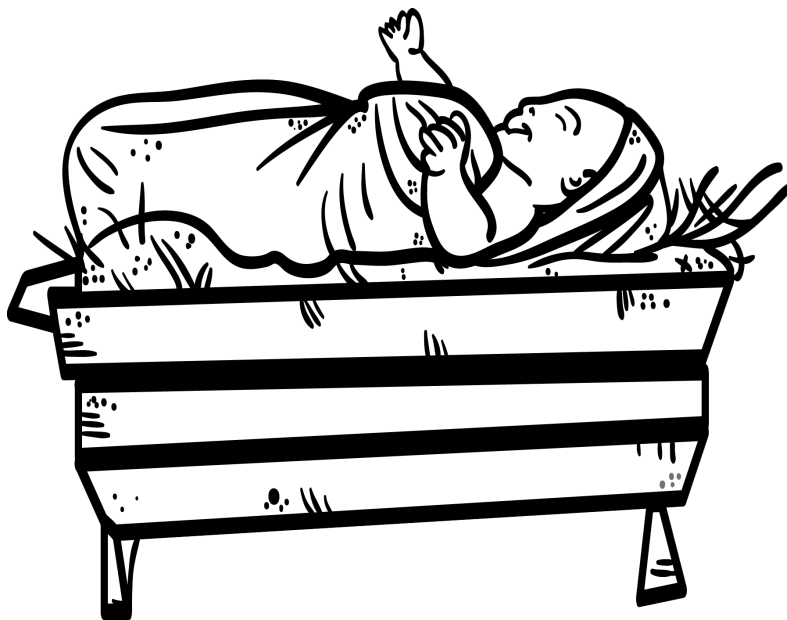
10. What type of note do you play when playing "look" and "down"? _____

11. What note do you play when playing "He"? _____

12. What note do you play when playing "The"? _____

lit - tle Lord Je - sus a - sleep on the hay.

13. How many beats does the note get that is played when playing "lit- "? _____
14. How many beats does the note get that is played when playing "- tle"? _____
15. What symbol is at the end of this line of music? _____
16. How many beats does the symbol at the end of this line of music get? _____



DECK THE HALLS



Deck the halls with boughs of hol - ly. Fa la la la la la la la la.

1. What key is the song in? _____

2. What is the time signature of the song? _____

3. With this time signature, how many beats are in a measure? _____

4. What is the name of the first symbol at the beginning of the staff? _____



'Tis the sea - son to be jol - ly. Fa la la la la la la la la.

5. What type of note do you play when playing "Tis"? _____

6. How many beats does the note get that is played when playing "Tis"? _____

7. What type of note is played when playing "the"? _____

8. What note is played when playing "jol -"? _____



Don we now our gay ap - par - rel. Fa la la la la la la la la.

9. How many beats does the note get that is played when playing "ap -"? _____

10. What does the symbol beside the note played when playing "la" the first time mean? _____

11. What note is played when playing the last note in the third measure? _____

12. How many eighth notes are in this line of music? _____



Troll the an - cient Yule - tide car - ol. Fa la la la la la la la la.

- 13. What note is played when playing "the"? _____
- 14. What note is played when playing "- cient"? _____
- 15. What note is played when playing each of the notes connected by the beam? _____
- 16. What type of note is the last note shown in this line of music? _____



THE FIRST NOEL

The first Noel the angels did say Was to

1. What key is the song in? _____
2. What is the time signature of the song? _____
3. With this time signature, how many beats are in a measure? _____
4. How many sharps are shown on the staff? _____

cer - tain poor shep - herds in fields as they lay, In

5. What note is played when playing "- tain"? _____
6. How many times in this line of music is a sharp played? _____
7. What note is played when playing "poor" and "- herds"? _____
8. Although the notes change, how many total beats are given to the word "In" at the end of this line of music? _____

fields where they lay keep - ing their sheep, On a

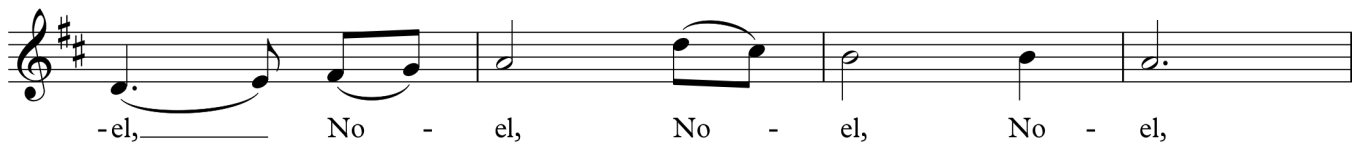
9. What notes are played when playing "fields"? _____
10. Which measure in this line of music has three quarter notes? _____
11. What note is played when playing "On"? _____
12. What note is played when playing "a"? _____



cold win - ter's night that was so deep. No -

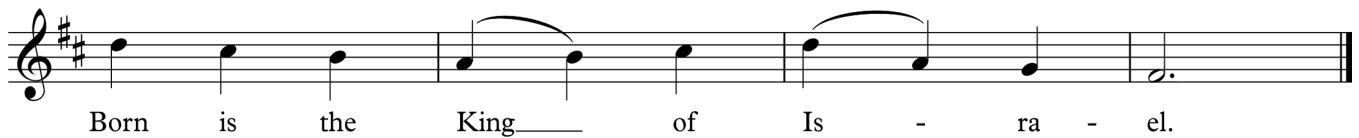
13. How many measures have three quarter notes each in this line of music? _____
14. What note is played when playing "win -" and "that"? _____
15. Although the notes change, how many total beats are given to the word "night" in this line of music?

16. What note is played when playing "deep"? _____



-el, No - el, No - el, No - el,

17. Although the notes change, how many total beats are given to the word "- el" at the beginning of this line of music? _____
18. How many half notes are played in this line of music? _____
19. What note is the last note played in this line of music? _____
20. How many beats are given to the word "- el" at the end of this line of music? _____



Born is the King of Is - ra - el.

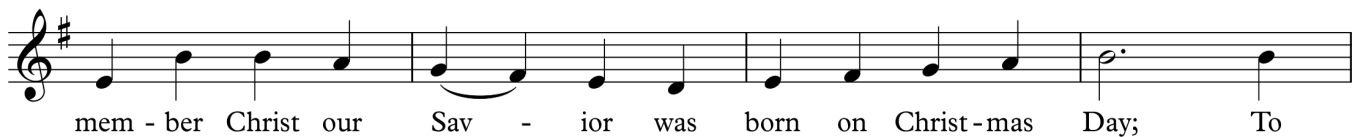
21. What note is played when playing "is" in the first measure? _____
22. What notes are played when playing "King"? _____
23. What note is played when playing "of"? _____
24. What notes are played when playing "Is" in the third measure? _____

GOD REST YE MERRY GENTLEMEN



God rest ye mer - ry gen - tle - men, let noth - ing you dis - may, Re -

1. What key is the song in? _____
2. What is the time signature of the song? _____
3. With this time signature, how many beats are in a measure? _____
4. How many sharps are shown on the staff? _____



mem - ber Christ our Sav - ior was born on Christ - mas Day; To

5. How many times do you see a note that is an "E" in this line of music? _____
6. How many times do you see a note that is a "B" in this line of music? _____
7. What note is played when playing "was"? _____
8. How many beats does the note get that is played when playing "Day"? _____



save us all from Sa - tan's power when we were gone a - stray. O____

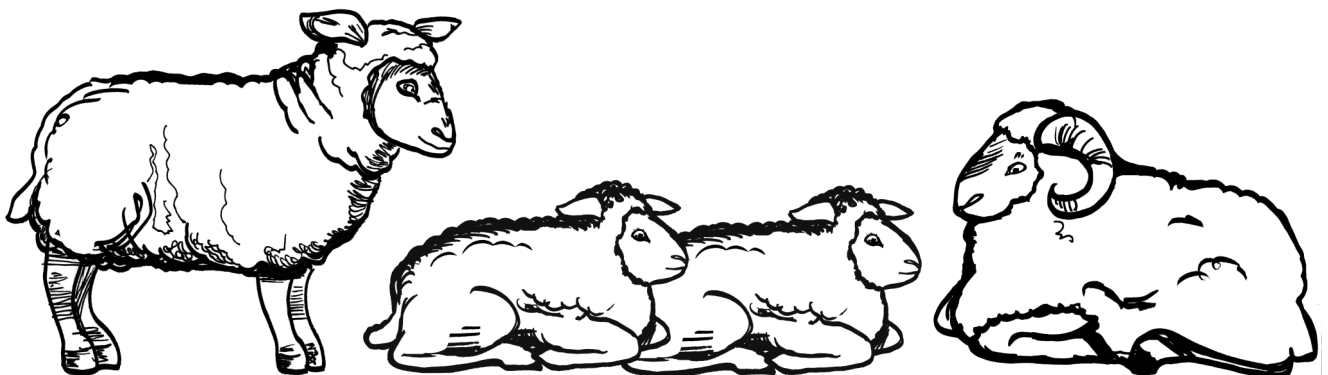
9. How many times do you see a note that is an "A" in this line of music? _____
10. What two-syllable word do you sing in only one beat? _____
11. What note do you play when playing "were"? _____
12. What type of note do you play when playing "- stray"? _____



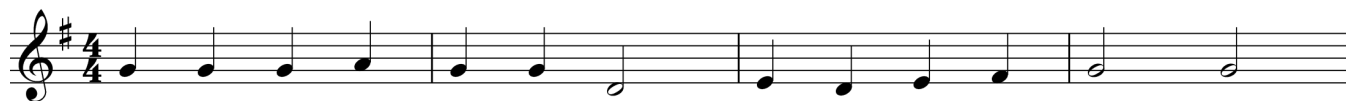
13. What note is played when playing "tid -"? _____
14. Which measure in this line of music is the only one with four quarter notes? _____
15. What note is played when playing the first "and"? _____
16. What type of note is played when playing "joy" in the last measure? _____



17. Although the notes change, how many total beats are given to the word "tid -" at the beginning of this line of music? _____
18. What note is played when playing "of"? _____
19. What type of note is played when playing "- fort"? _____
20. What type of note is played when playing "joy"? _____



GOOD KING WENCESLAS



Good King Wen - ces - las looked out, on the Feast of Ste - phen,

1. What key is the song in? _____
2. What is the time signature of the song? _____
3. With this time signature, how many beats are in a measure? _____
4. How many sharps are shown on the staff? _____



When the snow lay round a - bout, deep and crisp and e - ven;

5. How many times do you see a note that is a "G" in this line of music? _____
6. What type of note is played when playing "- bout"? _____
7. What note is played when playing "deep"? _____
8. How many beats does a half note get in this song? _____



Bright - ly shone the moon that night, tho' the frost was

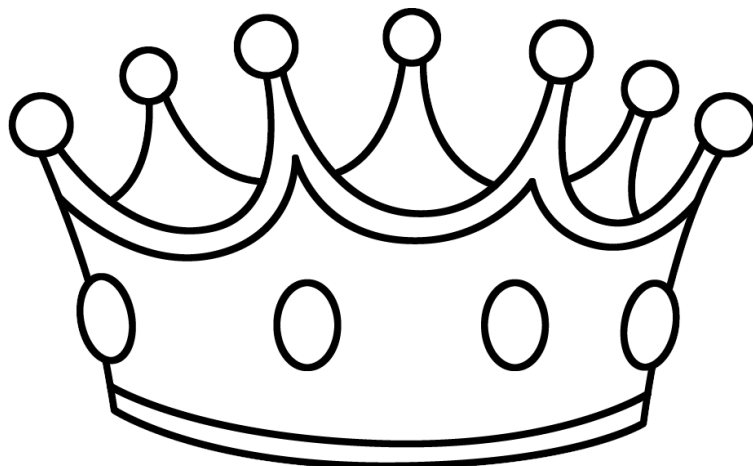
9. Which measure in this line of music is the only one that does not have four quarter notes? _____
10. What note is played for the only half note in this line of music? _____
11. What note is played when playing "tho'" and "frost"? _____
12. What note is played when playing "was"? _____



13. How many times are two identical notes found one right after the other in this line of music? _____
14. What type of note is played when playing "man"? _____
15. What note is played when playing "sight"? _____
16. What type of note is played when playing "sight"? _____



17. What note is played when playing "- ter"? _____
18. What notes are played when playing "fu - - -"? _____
19. What type of note is played for "-el"? _____
20. How many beats does the note get that is played when playing "- el"? _____



Answer Key

“O Come, All Ye Faithful”

- | | |
|------------------|------------------|
| 1. F Major | 11. quarter note |
| 2. C | 12. C |
| 3. half notes | 13. A |
| 4. quarter notes | 14. F |
| 5. E | 15. half note |
| 6. D | 16. twelve |
| 7. eighth note | 17. stem |
| 8. quarter rest | 18. flag |
| 9. C | 19. whole note |
| 10. B flat | 20. repeat |

“Angels We Have Heard On High”

- | | |
|---------------------------------|--------------------------|
| 1. F Major | 13. eighth note |
| 2. 4/4 | 14. C |
| 3. four | 15. one |
| 4. a quarter note gets one beat | 16. three |
| 5. A | 17. D, C, B flat, A |
| 6. dotted quarter note | 18. C, B flat, A, G |
| 7. one and a half beats | 19. B flat, A, G, F |
| 8. half note | 20. three |
| 9. C | 21. dotted quarter note |
| 10. eighth note | 22. G |
| 11. one-half beat | 23. B flat |
| 12. B flat | 24. the end of the piece |

“Away In A Manger”

- | | |
|---------------------------------|--------------------------|
| 1. F Major | 9. eighth note |
| 2. 3/4 | 10. quarter note |
| 3. three | 11. D |
| 4. a quarter note gets one beat | 12. C |
| 5. four | 13. one and a half beats |
| 6. second and third | 14. one-half beat |
| 7. D | 15. quarter rest |
| 8. A | 16. one beat |

Answer Key

“Deck The Halls”

1. F Major
2. 4/4
3. four
4. treble clef
5. dotted quarter note
6. one and a half beats
7. eighth note
8. A
9. one-half beat
10. it cancels the flat
11. F
12. six
13. B flat
14. G
15. D
16. half note

“The First Noel”

1. D Major
2. 3/4
3. three
4. two
5. C sharp
6. two
7. B
8. one beat
9. D, E
10. third
11. B
12. C sharp
13. three
14. C sharp
15. two
16. F
17. two
18. two and one dotted half note
19. A
20. three
21. C sharp
22. A, B
23. C sharp
24. D, A

“God Rest Ye Merry Gentlemen”

1. G Major
2. 4/4
3. four
4. one
5. three
6. four
7. D
8. three
9. four
10. power
11. E
12. half note
13. B
14. second
15. F
16. half note
17. two
18. E
19. quarter
20. dotted half note

Answer Key

“Good King Wenceslas”

- | | |
|--------------|------------------|
| 1. G Major | 11. E |
| 2. 4/4 | 12. F |
| 3. four | 13. three |
| 4. one | 14. quarter note |
| 5. seven | 15. A |
| 6. half note | 16. half note |
| 7. E | 17. A |
| 8. two | 18. G, C |
| 9. second | 19. whole note |
| 10. G | 20. four |

Copyright © 2020 by WriteBonnieRose, LLC

Select graphics used courtesy of [Artifex](#), [Lovely Jubblies Teach](#), and [RamonaM ClipArt](#).

Select clip art from Illumismart@ [Teachers Pay Teachers](#), [Etsy](#), and [L.L. Tisdell](#).

All Rights Reserved. This book may not be reproduced or transmitted by any means, including graphic, electronic, or mechanical, without the express written consent of the author except in the case of brief quotations embodied in critical articles and reviews and those uses expressly described in the following Terms of Use. You are welcome to link back to the author's website, <http://writebonnierose.com>, but may not link directly to the PDF file. You may not alter this work, sell or distribute it in any way, host this file on your own website, or upload it to a shared website.

Terms of Use: For use by a family, this unit can be printed and copied as many times as needed. Classroom teachers may reproduce one copy for each student in his or her class. Members of co-ops or workshops may reproduce one copy for up to fifteen children. This material cannot be resold or used in any way for commercial purposes. Please contact the publisher with any questions.