

homeschool

GIVEAWAYS & FREEBIES

Thank you for downloading this Landforms Fact Cards and Cheat Sheets unit. Our subscribers get access to all sorts of exclusive freebies as a perk for being a loyal reader.

We'd love for you to join our list (if you haven't already) of over 100,000 homeschoolers who love free stuff! [Click here to subscribe](#) and we will send you all of our current free resources.



Join 100,000 homeschoolers who love FREE stuff! Our FREE resource library is a subscriber perk!



This publication may not be reproduced, stored, or transmitted in whole or in part, in any form or by any means, electronic, mechanical, or otherwise, without prior written consent from Homeschool Giveaways. Brief quotations may be included in a review. It may be stored on your computer in pdf format. This unit can be printed as needed for personal use only.



Select graphics courtesy of [EduClips](#), [Kari Bolt Clip Art](#), [Studio Devanna](#), [The Painted Crow](#), and [Zip-a-Dee-Doo-Dah Designs](#).

Select graphics from Illumismart@ [Teachers Pay Teachers](#), [Etsy](#), and [L.L. Tisdell](#).

Landforms

Term	Definition
barrier island	sandy strip of island paralleling a shore that protects the shore from the ocean's effects
bay	body of water, smaller than a gulf, that is partially surrounded by land
beach	where water meets land
butte	juts up from the land and stands tall above it as a steep hill or small mountain (smaller than a mesa)
canyon	deep valley that has steep sides
cape	point of land that sticks out into a body of water
cliff	anywhere the land juts out overtop land or water and then stops abruptly
delta	where a river runs into a body of water and slows down, allowing clay, sand, gravel, and other things the river has picked up to settle at the mouth of the river
desert	barren places that receive an extremely small amount of rainfall each year
estuary	where salt water from the sea meets fresh water from a river
fjord	long inlet or arm of the sea that winds and twists
geyser	spring that shoots hot water, often in a great stream that can be more than 100 feet (30 meters) high, though some only bubble a little at the surface
glacier	tremendously large piece of ice that slides and moves because of the pull of gravity
gorge	similar to a canyon in that it is usually a valley surrounded by steep and rocky sides, but a gorge is narrow and usually has a stream flowing through it
gulf	large portion of the ocean that is partly surrounded by land
headland	piece of land that sticks out into a body of water
hill	heap of land that is often round on top and is not as high as a mountain
inlet	narrow place where water passes between peninsulas or through a barrier island on its way to a bay or lagoon
island	any piece of land smaller than a continent that is surrounded by water
isthmus	narrow piece of land that connects two larger bodies of land

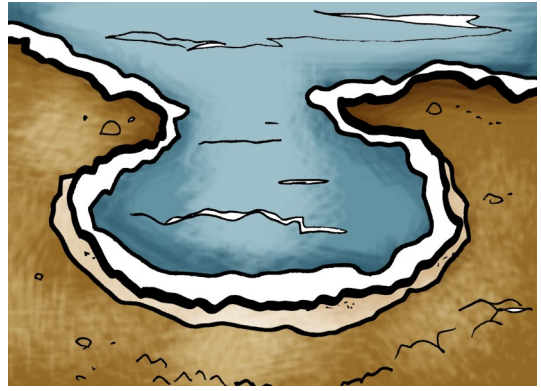
Landforms

Term	Definition
lagoon	shallow body of water that is at least partially cut off from the open sea
lake	large inland body of water
mesa	common in dry climates; looks like a huge table sticking up by itself with a flat top and steep sides
mountain	high steep slopes, sharp or slightly rounded peaks, and cooler air at the top than at the bottom
oasis	place in a desert where water comes up from underground
peninsula	piece of land that is surrounded on all sides by water except one, where the peninsula connects to the mainland
plain	wide, mostly flat area of land that doesn't have any hills, mountains, or any other natural landforms that change the elevation
plateau	flat area that sits above the area around it on at least one side
river	stream of water that flows above ground in a channel
sand dune	hills of sand in a desert
sea stack	tall piece of rock separated by water from the cliffs on a shore
tombolo	strip of sand or gravel that connects an island with either the mainland or another island
valley	a natural dip in the Earth's surface
volcano	an opening in the earth's crust at the top of, or sometimes on the sides of, a mountain or hill
waterfall	flow of water from a steep, high place



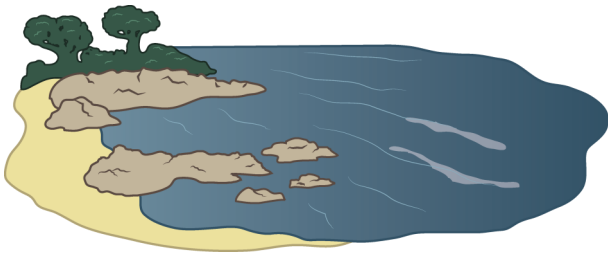
barrier island

sandy strip of island paralleling a shore that protects the shore from the ocean's effects



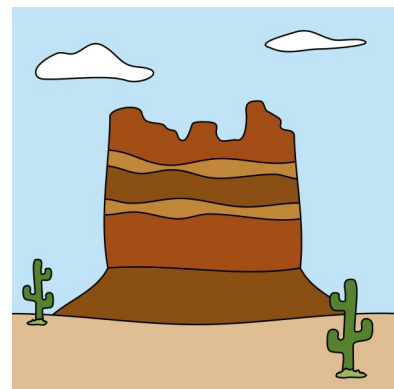
bay

body of water, smaller than a gulf, that is partially surrounded by land



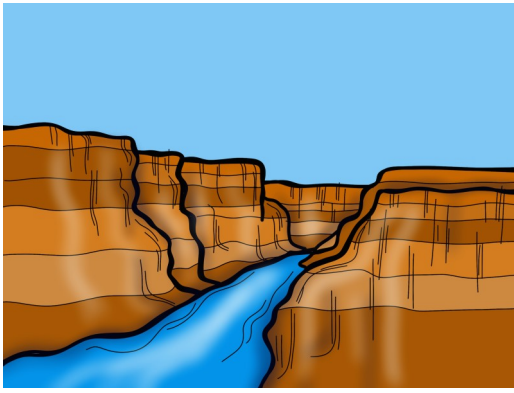
beach

where water meets land



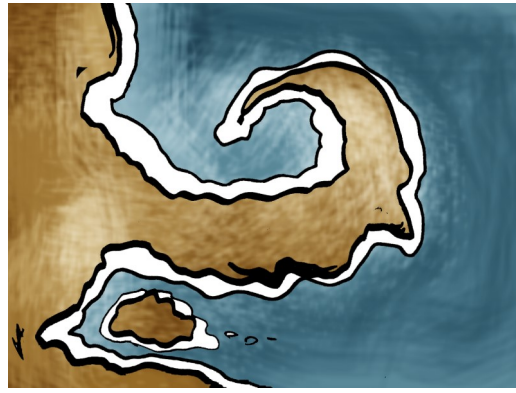
butte

juts up from the land and stands tall above it as a steep hill or small mountain (smaller than a mesa)



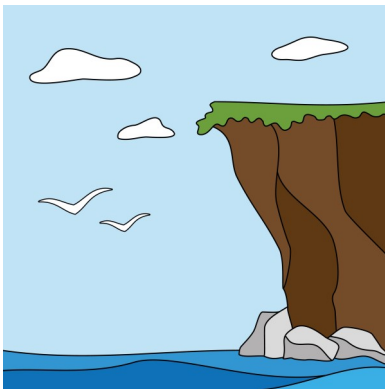
canyon

deep valley that has steep sides



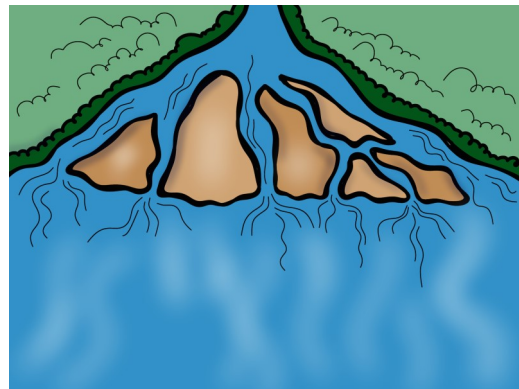
cape

point of land that sticks out into a body of water



cliff

anywhere the land juts out overtop land or water and then stops abruptly



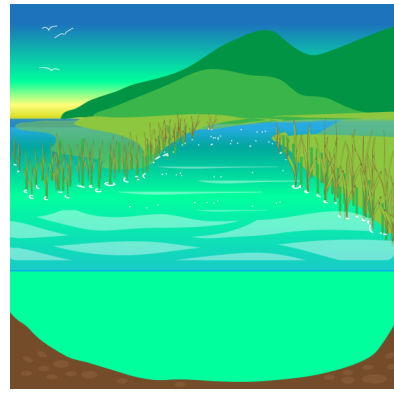
delta

where a river runs into a body of water and slows down, allowing clay, sand, gravel, and other things the river has picked up to settle at the mouth of the river



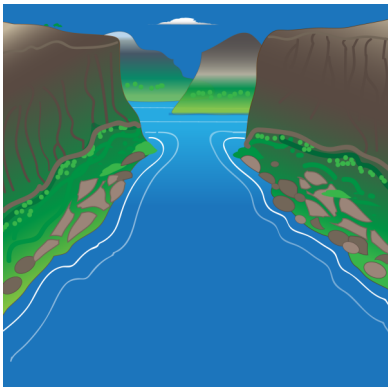
desert

barren places that receive an extremely small amount of rainfall each year



estuary

where salt water from the sea meets fresh water from a river



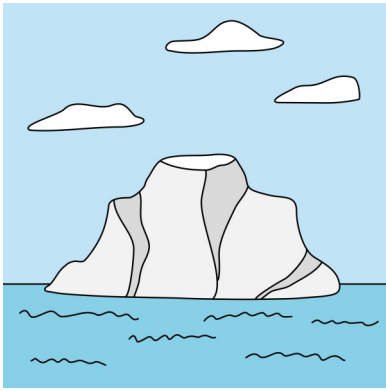
fjord

long inlet or arm of the sea that winds and twists



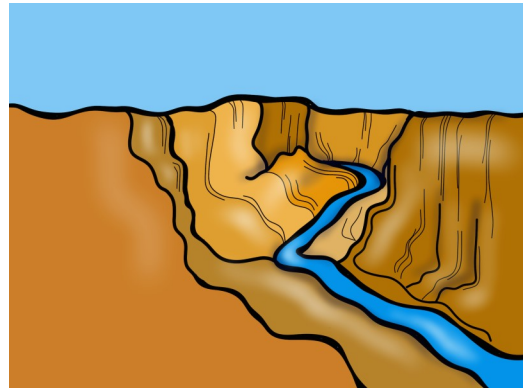
geyser

spring that shoots hot water, often in a great stream that can be more than 100 feet (30 meters) high, though some only bubble a little at the surface



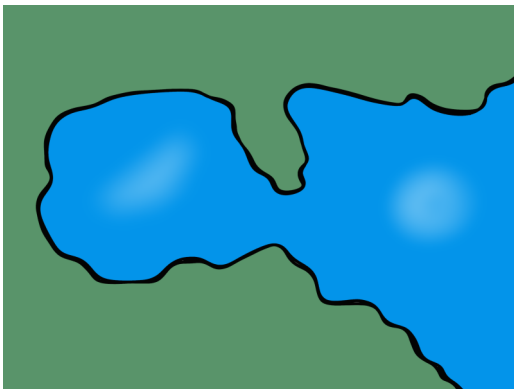
glacier

tremendously large piece of ice that slides and moves because of the pull of gravity



gorge

similar to a canyon in that it is usually a valley surrounded by steep and rocky sides, but a gorge is narrow and usually has a stream flowing through it



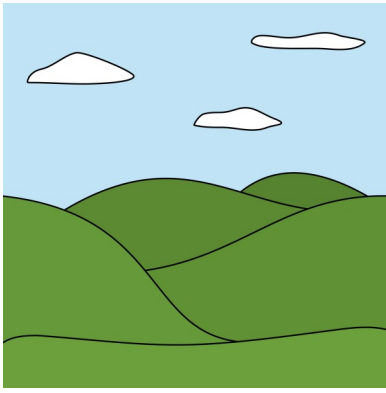
gulf

large portion of the ocean that is partly surrounded by land



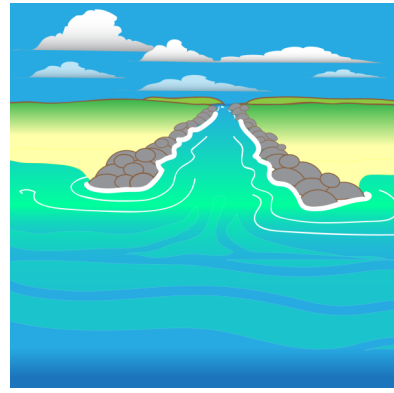
headland

piece of land that sticks out into a body of water



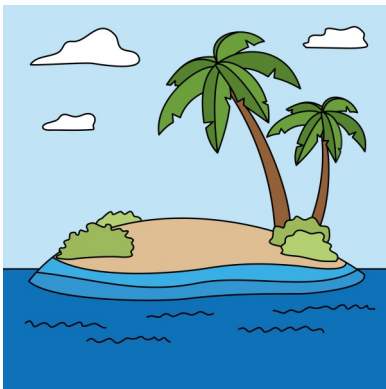
hill

heap of land that is often round on top and is not as high as a mountain



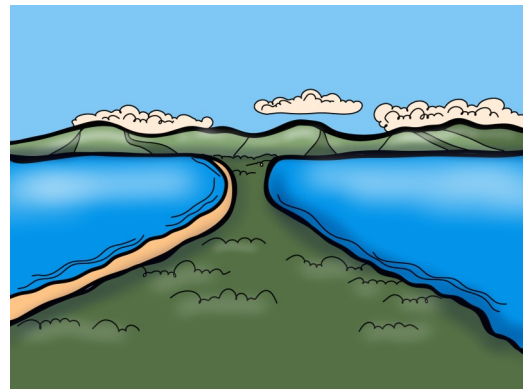
inlet

narrow place where water passes between peninsulas or through a barrier island on its way to a bay or lagoon



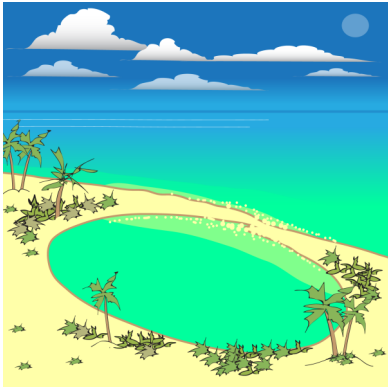
island

any piece of land smaller than a continent that is surrounded by water



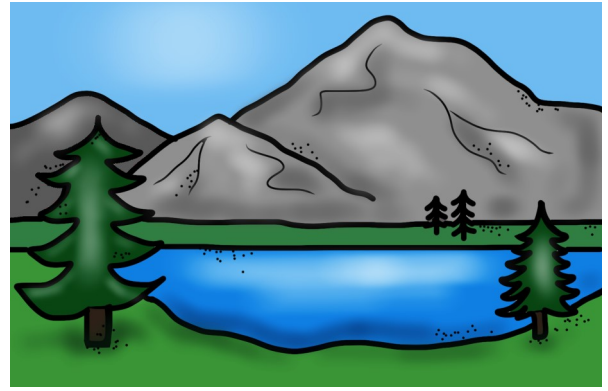
isthmus

narrow piece of land that connects two larger bodies of land



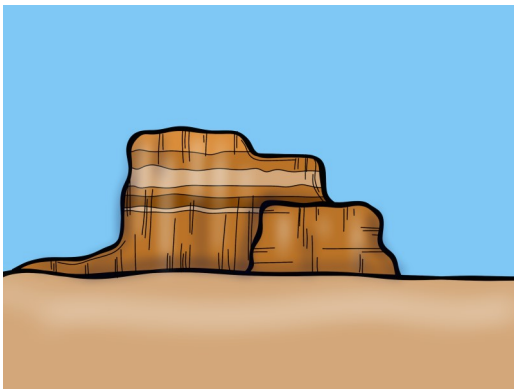
lagoon

shallow body of water that is at least partially cut off from the open sea



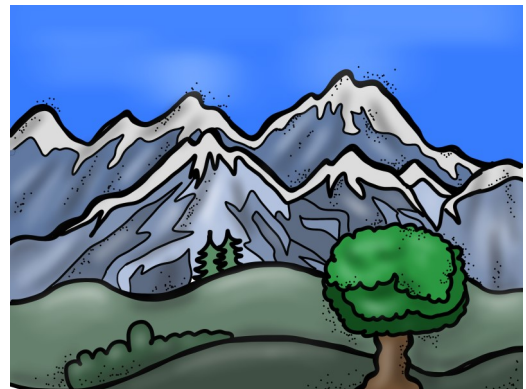
lake

large inland body of water



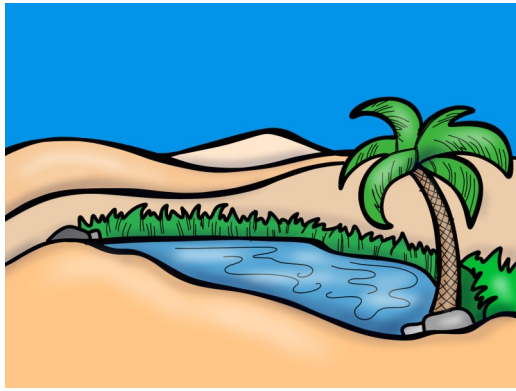
mesa

common in dry climates; looks like a huge table sticking up by itself with a flat top and steep sides



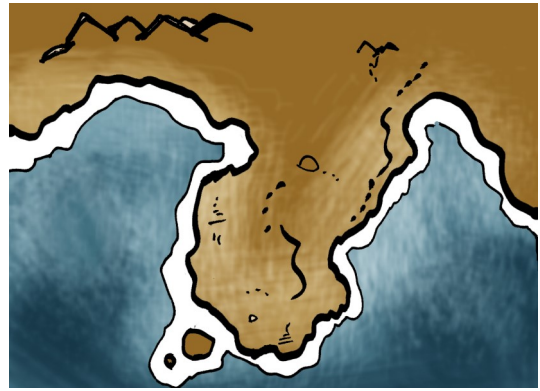
mountain

high steep slopes, sharp or slightly rounded peaks, and cooler air at the top than at the bottom



oasis

place in a desert where water comes up from underground



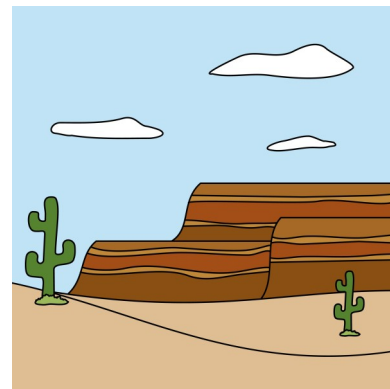
peninsula

piece of land that is surrounded on all sides by water except one, where the peninsula connects to the mainland



plain

wide, mostly flat area of land that doesn't have any hills, mountains, or any other natural landforms that change the elevation



plateau

flat area that sits above the area around it on at least one side



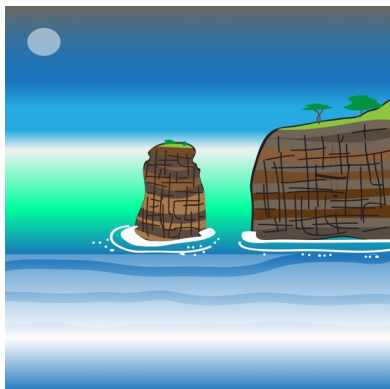
river

stream of water that flows above ground in a channel



sand dune

hills of sand in a desert



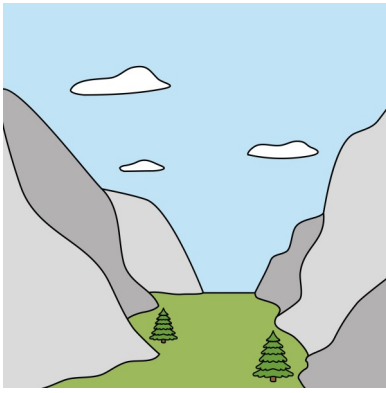
sea stack

tall piece of rock separated by water from the cliffs on a shore



tombolo

strip of sand or gravel that connects an island with either the mainland or another island



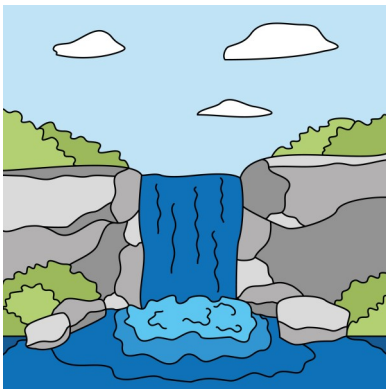
valley

a natural dip in the Earth's surface



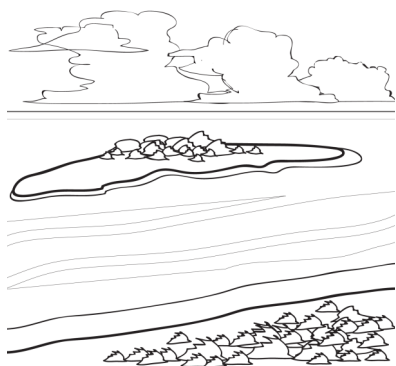
volcano

an opening in the earth's crust at the top of, or sometimes on the sides of, a mountain or hill

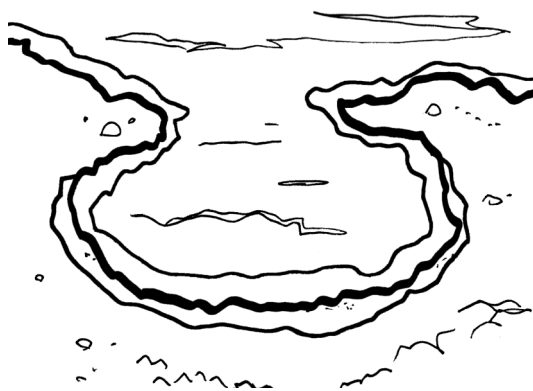


waterfall

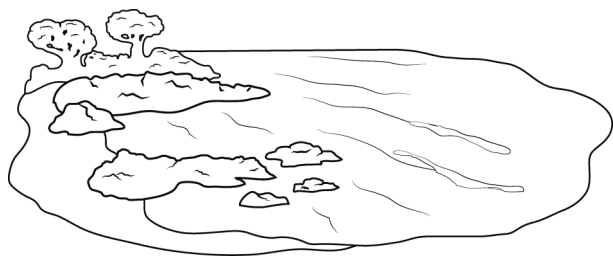
flow of water from a steep, high place



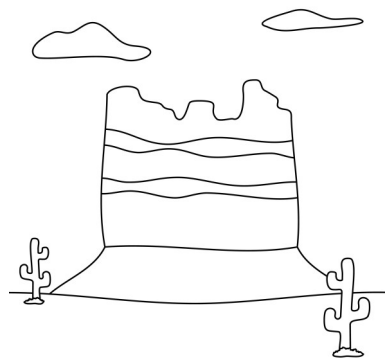
barrier island



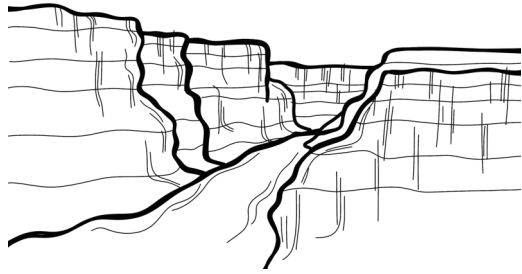
bay



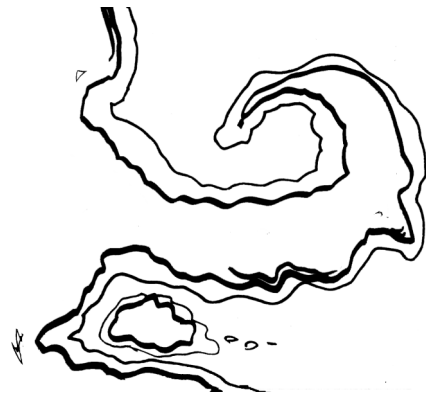
beach



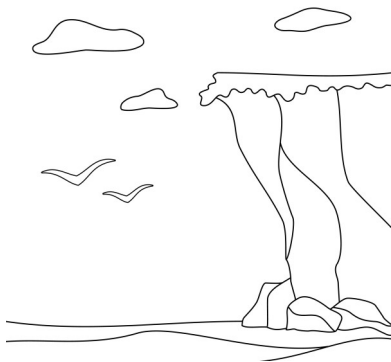
butte



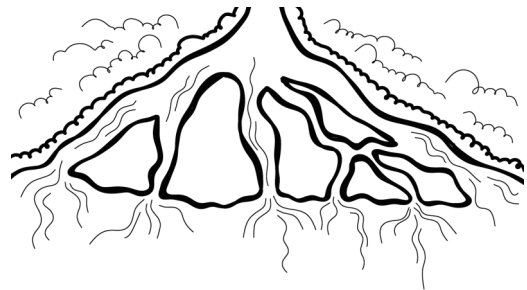
canyon



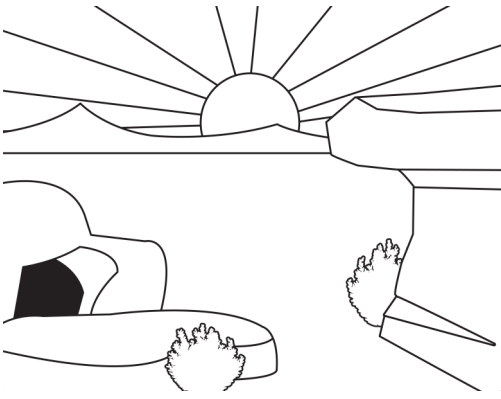
cape



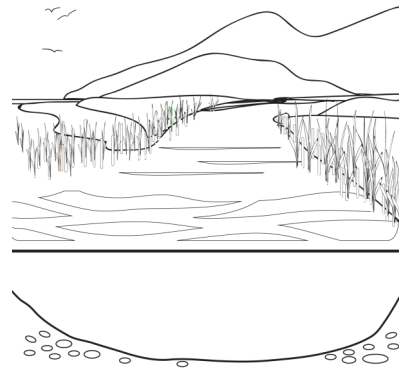
cliff



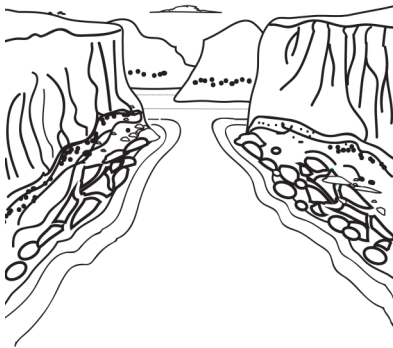
delta



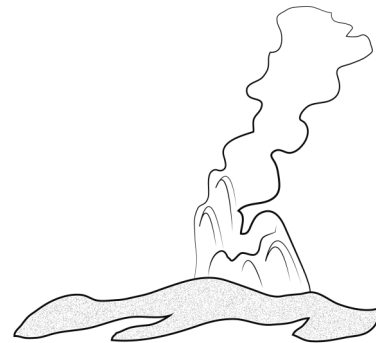
desert



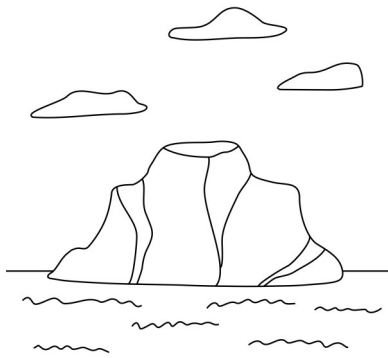
estuary



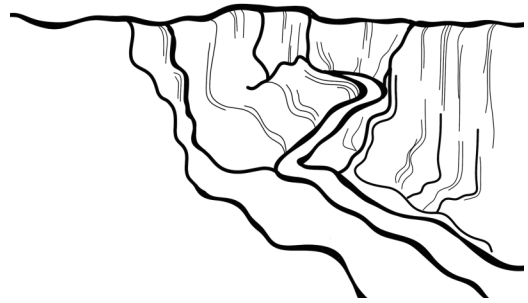
fjord



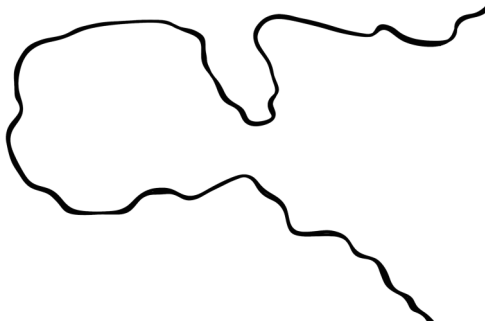
geyser



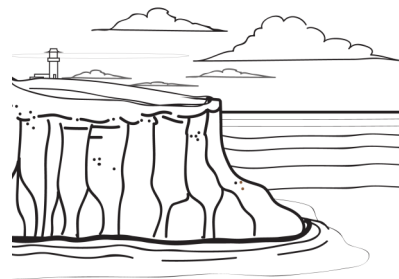
glacier



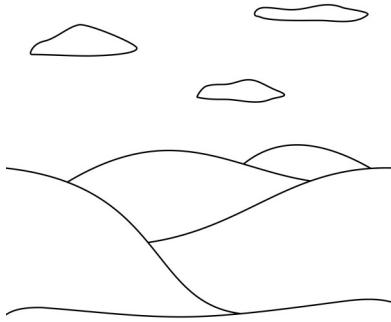
gorge



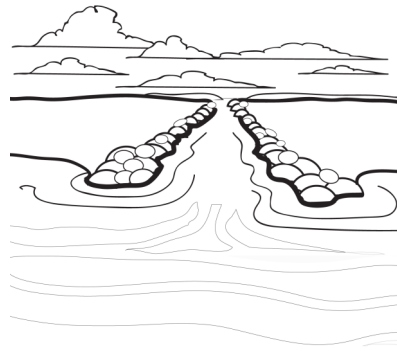
gulf



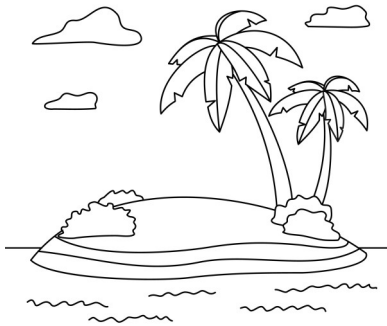
headland



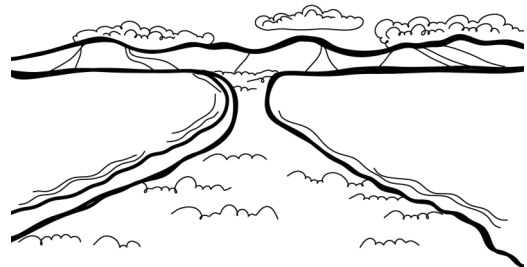
hill



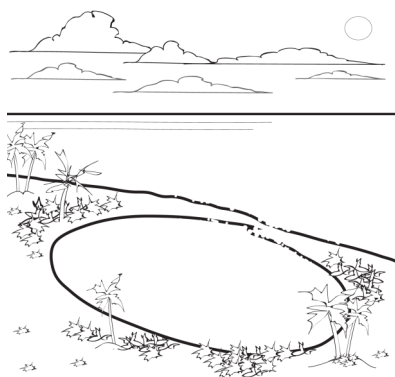
inlet



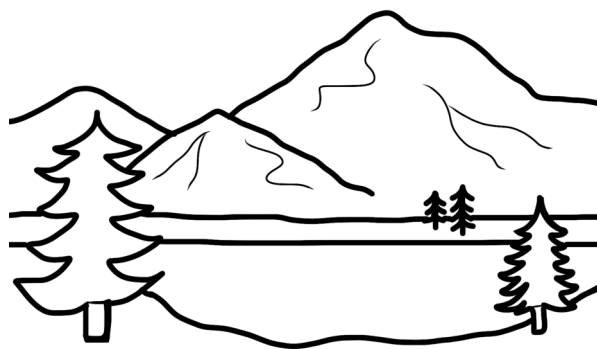
island



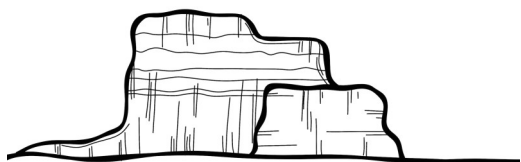
isthmus



lagoon



lake



mesa



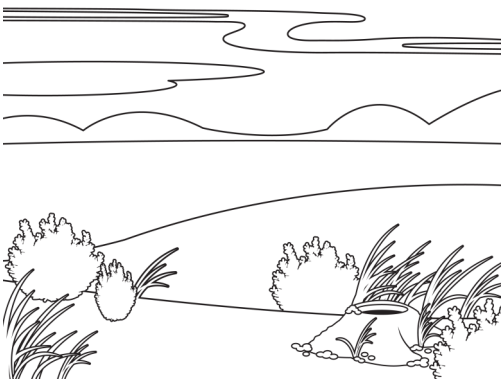
mountain



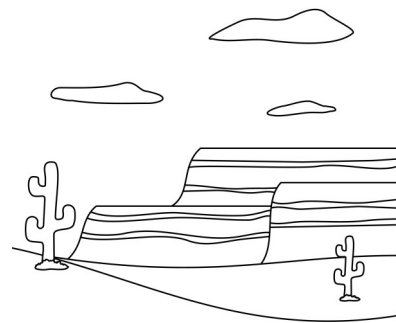
oasis



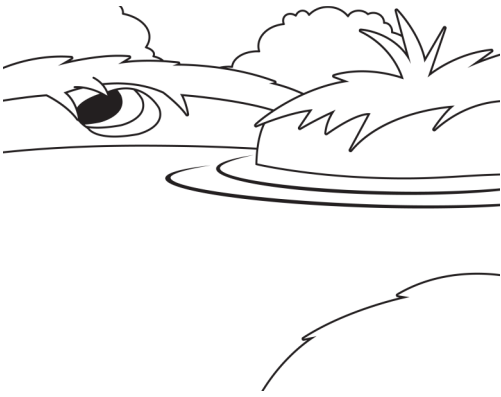
peninsula



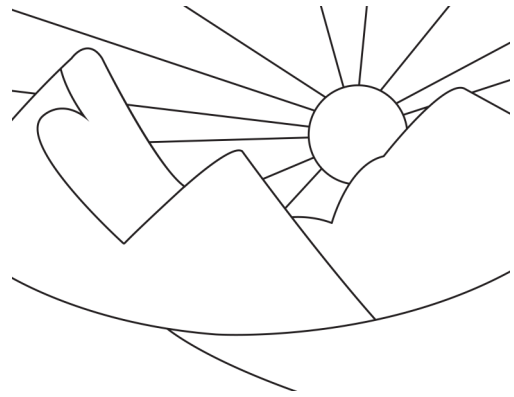
plain



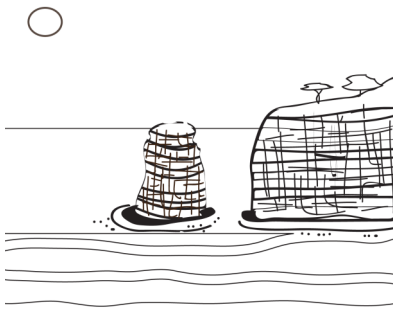
plateau



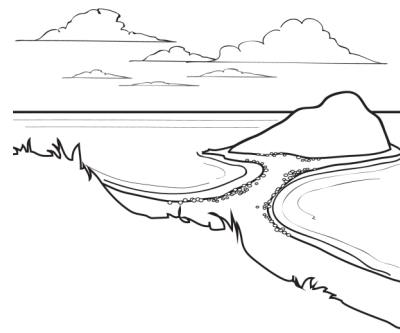
river



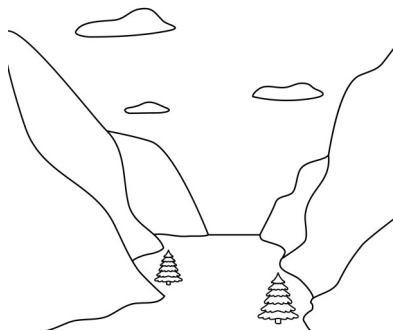
sand dune



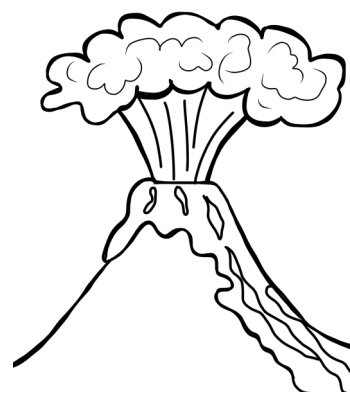
sea stack



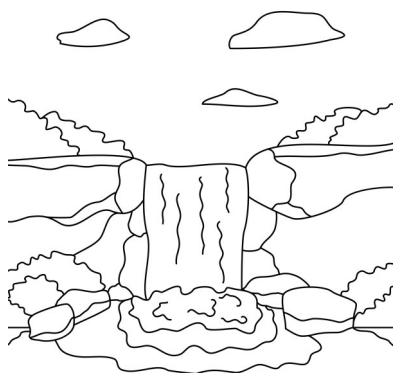
tombolo



valley



volcano



waterfall