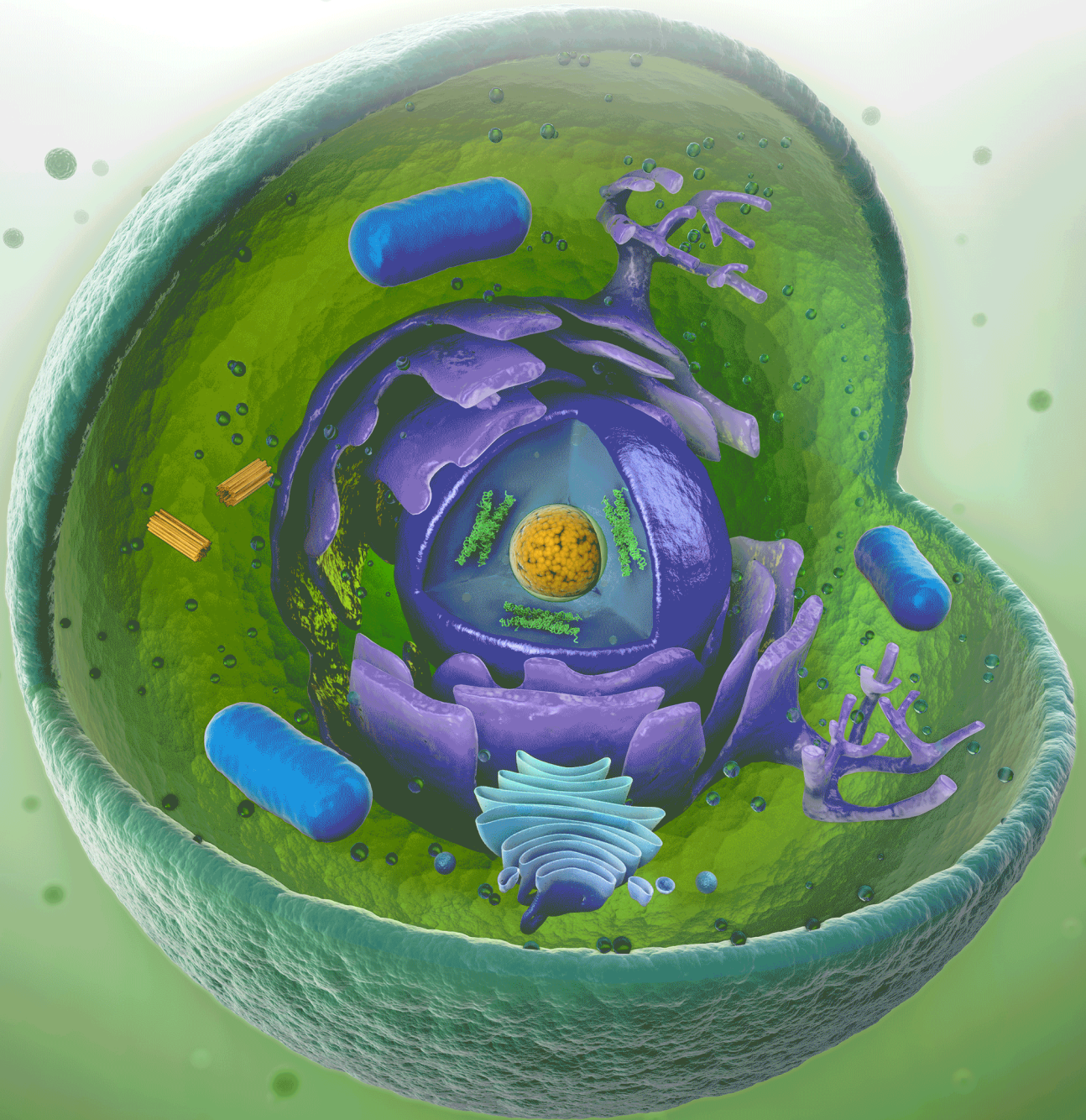


PARTS OF A CELL

Fact Cards & Cheat Sheets





Thank you for your downloading this resource. Our subscribers get access to all sorts of exclusive freebies as a perk for being a loyal reader.

To download more free homeschool resources, [login to our subscriber library](#).

by [Homeschool Giveaways](#)

© Copyright 2020

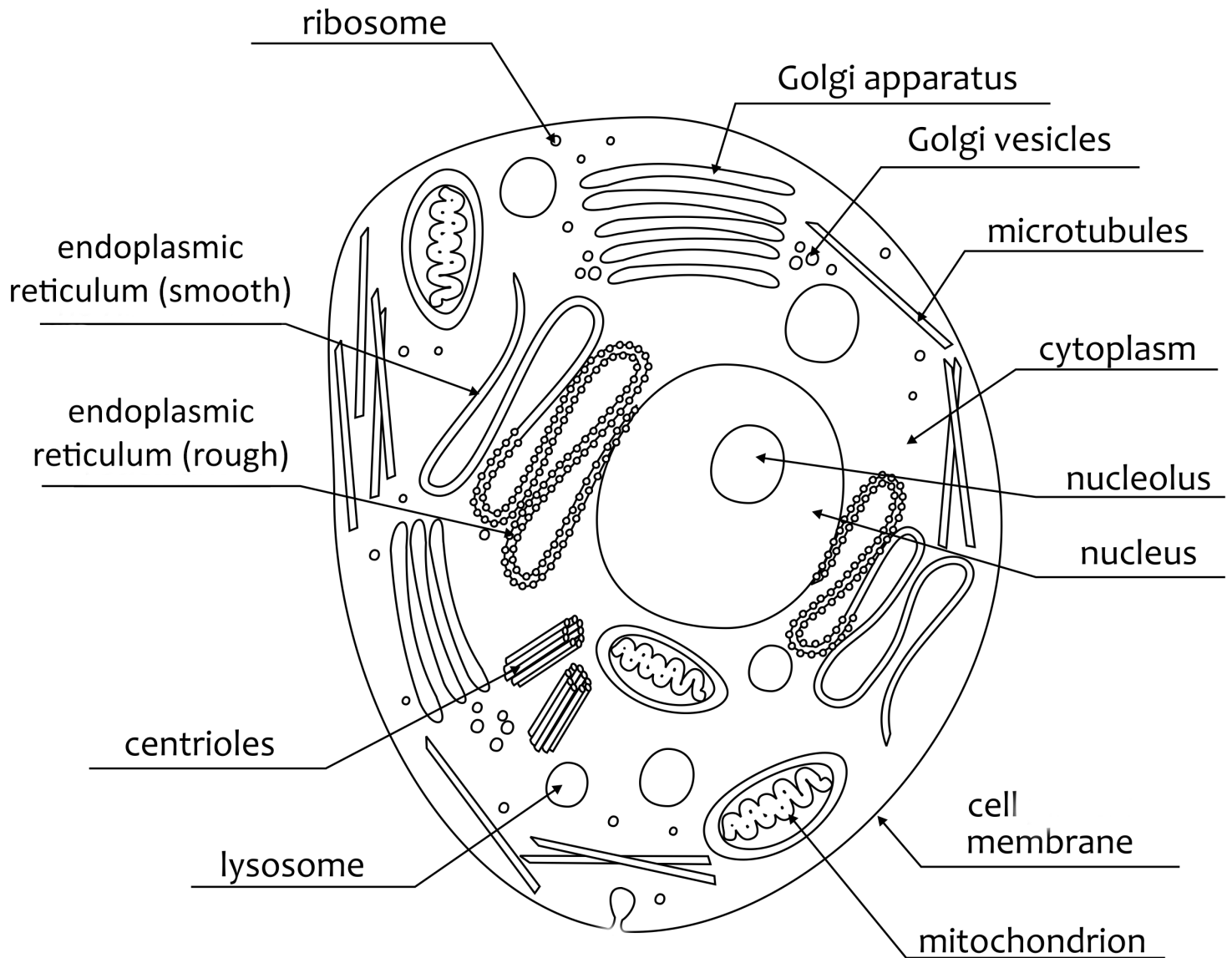
Clipart by: [The Painted Crow](#) and Poppydreamz Digital Art found on Teachers Pay Teachers @ <http://www.teacherspayteachers.com/Store/Poppydreamz-Digital-Art>.

All rights reserved. No part of this work may be reproduced or distributed in any form by any means—graphic, electronic, or mechanical, including photocopying, recording, taping, or storing in information storage or retrieval systems—without the prior written permission from the publisher.

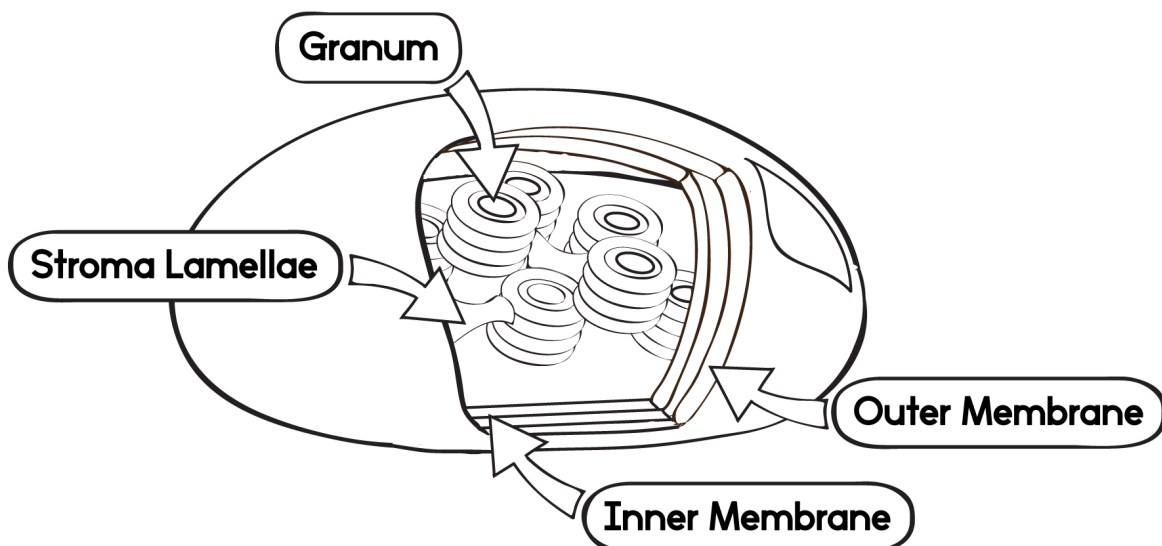
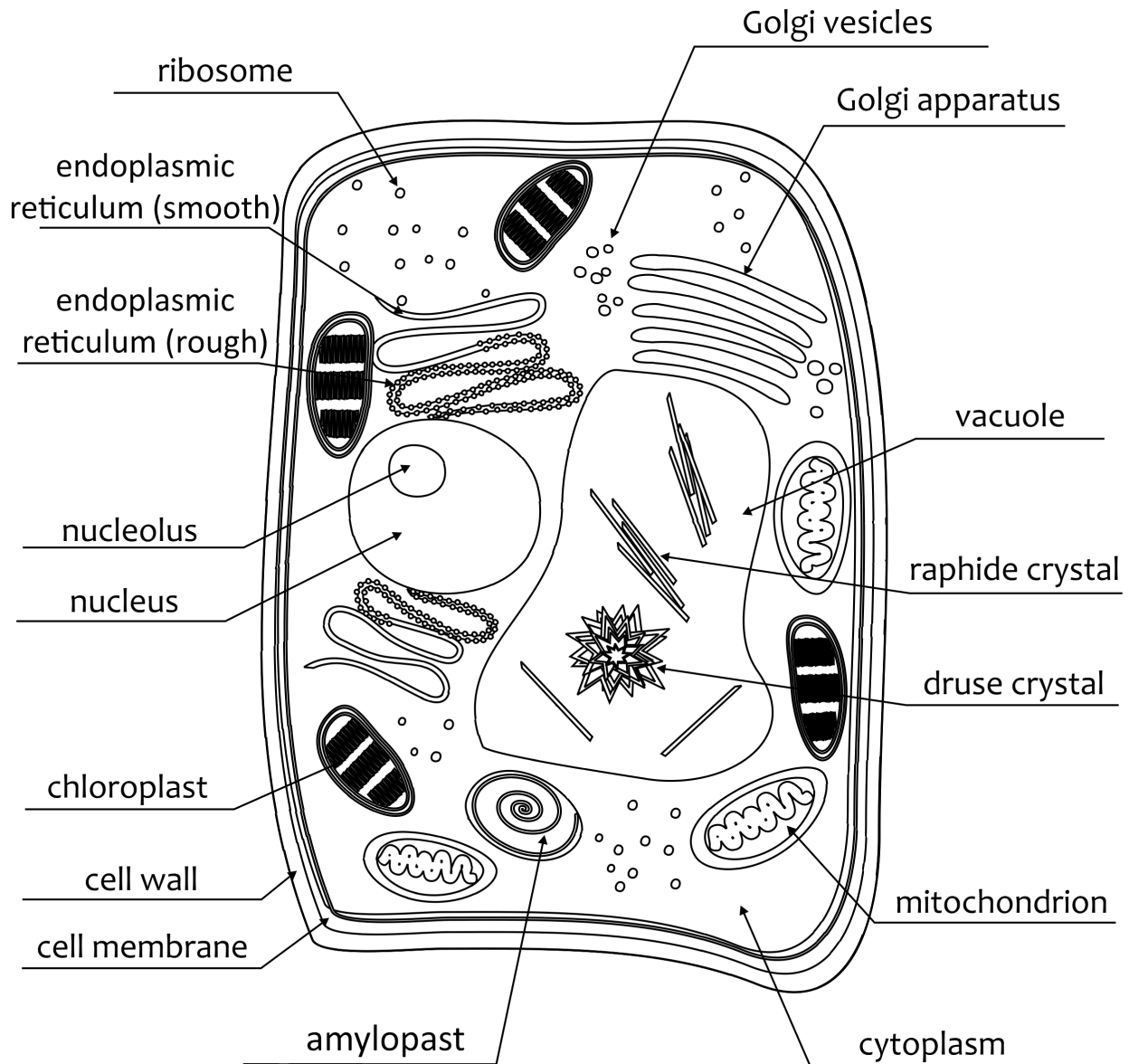
Original purchaser is granted permission to print copies for use within his or her immediate family.

For additional resources visit HomeschoolGiveaways.com.

Animal Cell



Plant Cell and Chloroplast

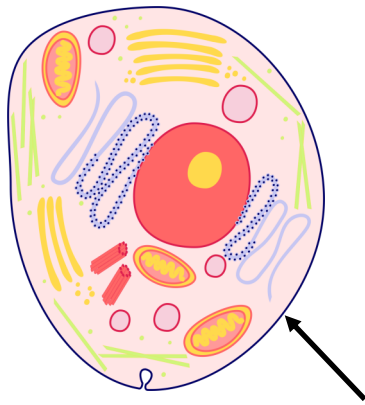


Parts of Animal & Plant Cells

Term	Definition
Cell membrane	protective covering of the cell that allows substances such as nutrients in and allows others, such as waste, out
Centrioles	play a part in cell reproduction and often contribute to the cell's shape and support
Cytoplasm	jellylike filling that holds the other parts of the cell and is made of water and chemicals
Endoplasmic reticulum	pouches formed by membranes; some parts are smooth while others are rough due to ribosomes
Golgi apparatus	number of flat membrane sacs responsible for processing and transporting proteins
Golgi vesicles	part of the Golgi apparatus; some carry proteins to the cell membrane while others store proteins
Lysosome	cell's digestion center; uses enzymes to digest food, broken parts of the cell, and other materials
Microtubules	make up the flagella of certain cells, allowing them to move
Mitochondrion	place where food is converted into energy for the cell
Nucleolus	found in the nucleus of some cells; contains proteins and RNA and helps create ribosomes
Nucleus	part of the cell that contains chromosomes and controls all activity for the cell
Ribosome	part of the cell responsible for building proteins

Parts Found Only in Plant Cells

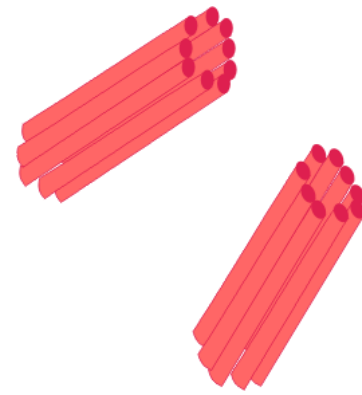
Term	Definition
Amyloplast	forms and stores starch
Cell wall	protects the cell and gives it a square shape
Chloroplast	generates food for the cell; filled with chlorophyll, which is responsible for the plant's green color
Druse crystal	stores extra calcium for the plant; can be poisonous to people and many animals
Granum	a stack of closed disks, called thylakoids, inside a chloroplast
Raphide crystal	crystals that are distasteful or dangerous to animals; discourages animals from eating certain plants
Stroma lamellae	connects one granum to another inside a chloroplast



Cell Membrane

Found In: Animal & Plant Cells

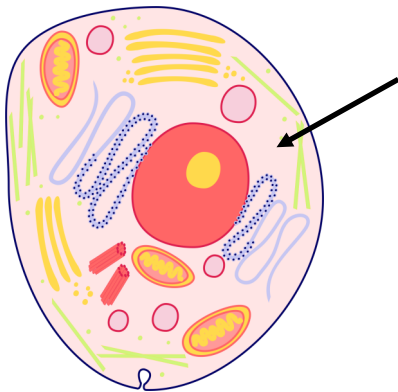
Protective covering of the cell that allows substances such as nutrients in and allows others, such as waste, out



Centrioles

Found In: Animal & Plant Cells

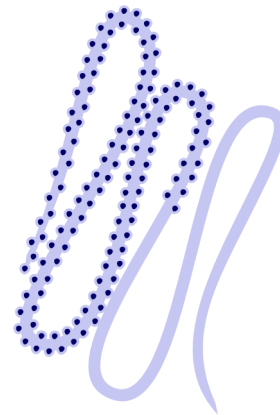
Play a part in cell reproduction and often contribute to the cell's shape and support



Cytoplasm

Found In: Animal & Plant Cells

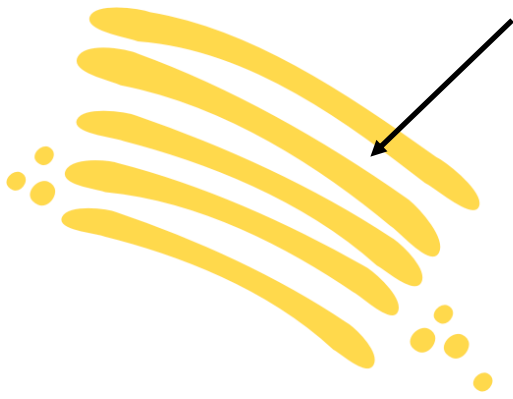
Jellylike filling that holds the other parts of the cell and is made of water and chemicals



Endoplasmic Reticulum

Found In: Animal & Plant Cells

Pouches formed by membranes; some parts are smooth while others are rough due to ribosomes



Golgi Apparatus

Found In: Animal & Plant Cells

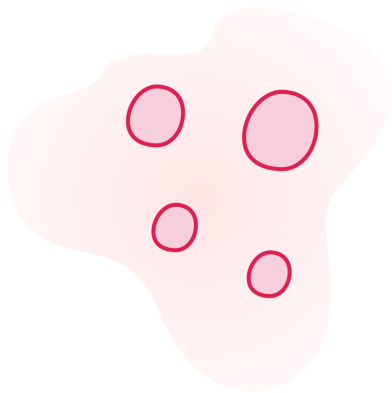
Number of flat membrane sacs responsible for processing and transporting proteins



Golgi Vesicles

Found In: Animal & Plant Cells

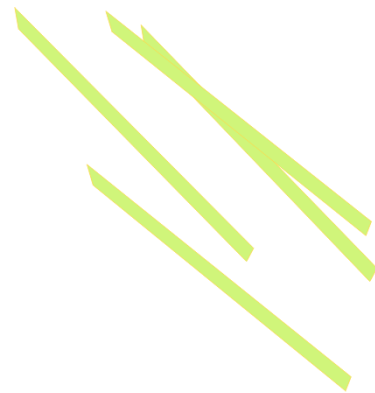
Part of the Golgi apparatus; some carry proteins to the cell membrane while others store proteins



Lysosome

Found In: Animal & Plant Cells

Cell's digestion center; uses enzymes to digest food, broken parts of the cell, and other materials



Microtubules

Found In: Animal & Plant Cells

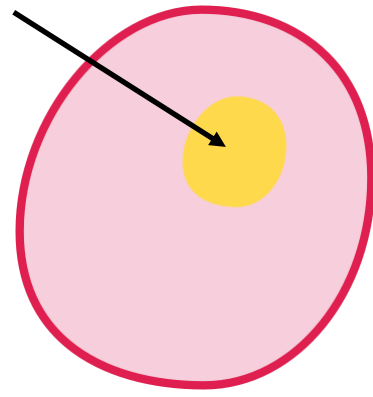
Make up the flagella of certain cells, allowing them to move



Mitochondrion

Found In: Animal & Plant Cells

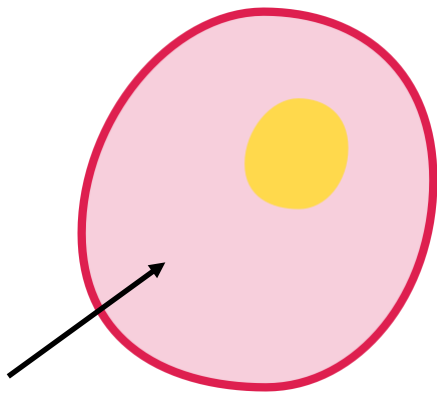
Place where food is converted into energy for the cell



Nucleolus

Found In: Animal & Plant Cells

Found in the nucleus of some cells; contains proteins and RNA and helps create ribosomes



Nucleus

Found In: Animal & Plant Cells

Part of the cell that contains chromosomes and controls all activity for the cell



Ribosome

Found In: Animal & Plant Cells

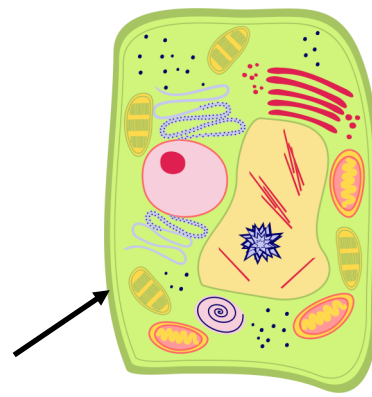
Part of the cell responsible for building proteins



Amyloplast

Found In: Plant Cells

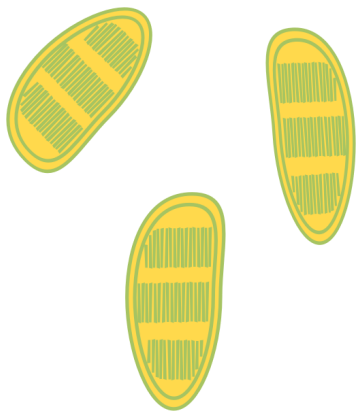
Forms and stores starch



Cell Wall

Found In: Plant Cells

Protects the cell and gives it a square shape



Chloroplast

Found In: Plant Cells

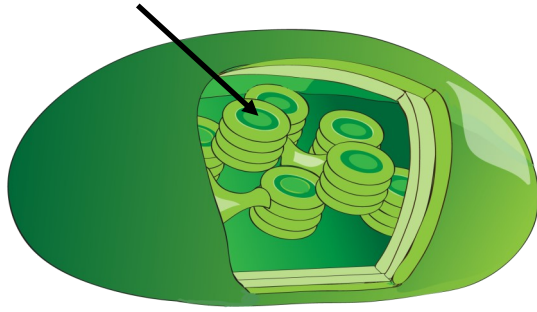
Generates food for the cell; filled with chlorophyll, which is responsible for the plant's green color



Druse Crystal

Found In: Plant Cells

Stores extra calcium for the plant; can be poisonous to people and many animals



Granum

Found In: Plant Cells

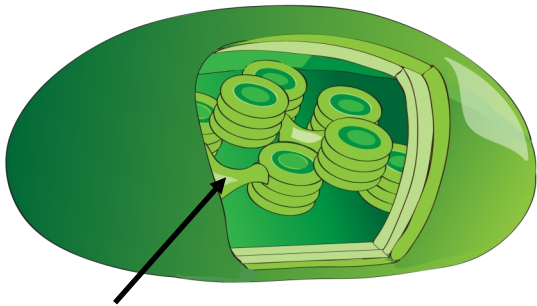
A stack of closed disks, called thylakoids, inside a chloroplast



Raphide Crystal

Found In: Plant Cells

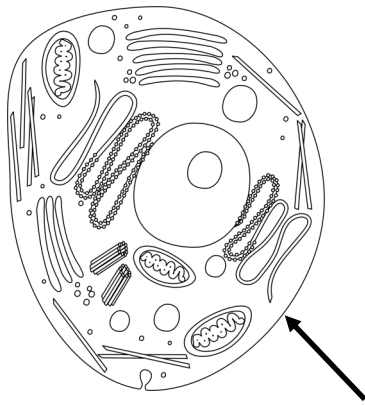
Crystals that are distasteful or dangerous to animals; discourages animals from eating certain plants



Stroma Lamellae

Found In: Plant Cells

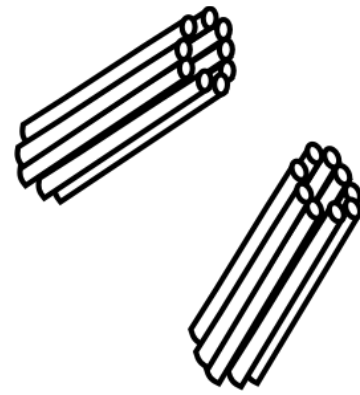
Connects one granum to another inside a chloroplast



Cell Membrane

Found In: _____

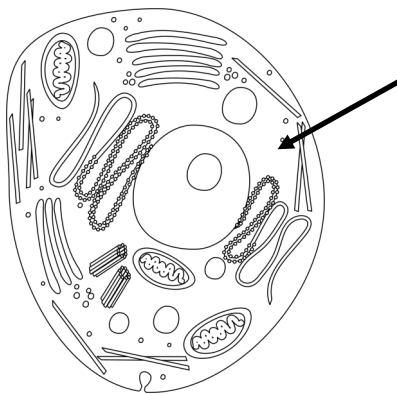
Definition/Function: _____



Centrioles

Found In: _____

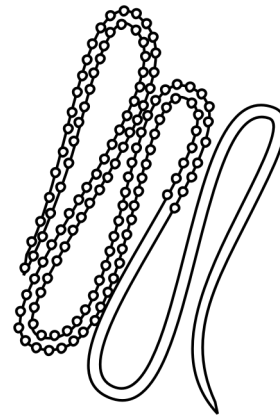
Definition/Function: _____



Cytoplasm

Found In: _____

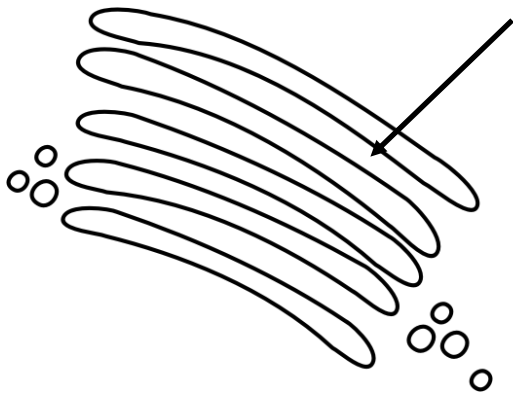
Definition/Function: _____



Endoplasmic Reticulum

Found In: _____

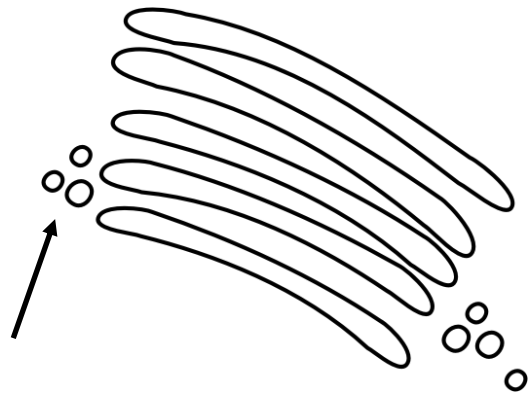
Definition/Function: _____



Golgi Apparatus

Found In: _____

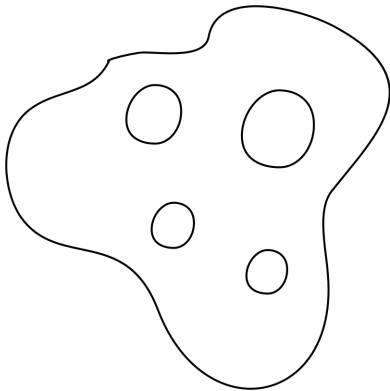
Definition/Function: _____



Golgi Vesicles

Found In: _____

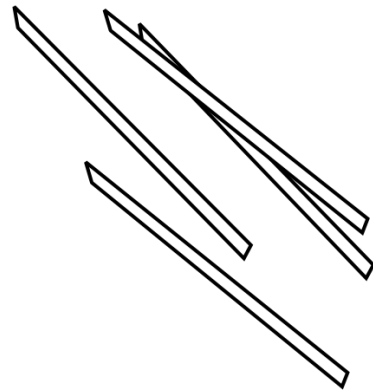
Definition/Function: _____



Lysosome

Found In: _____

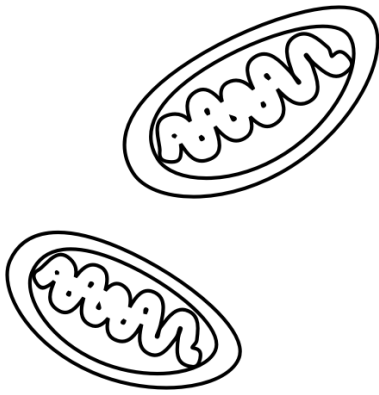
Definition/Function: _____



Microtubules

Found In: _____

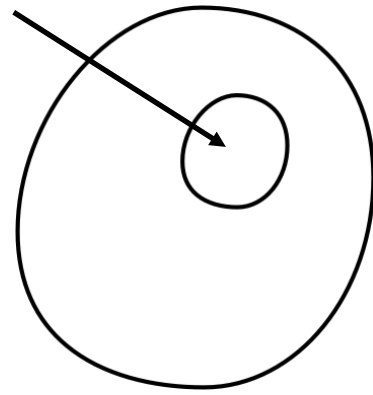
Definition/Function: _____



Mitochondrion

Found In: _____

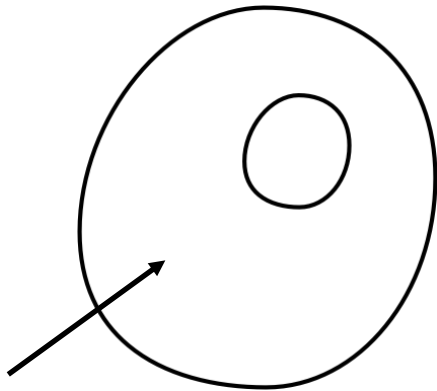
Definition/Function: _____



Nucleolus

Found In: _____

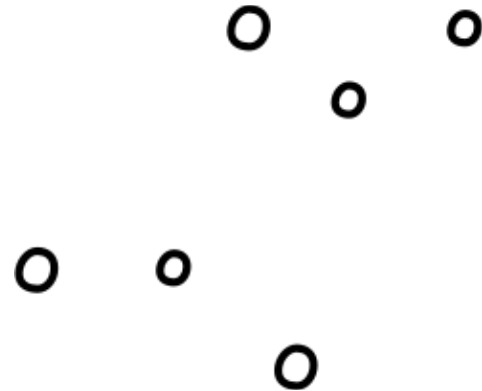
Definition/Function: _____



Nucleus

Found In: _____

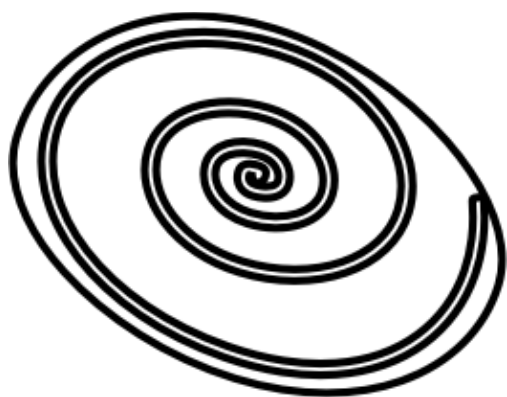
Definition/Function: _____



Ribosome

Found In: _____

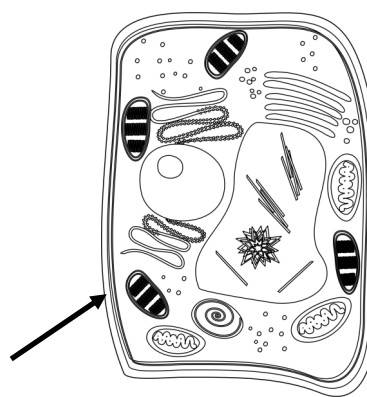
Definition/Function: _____



Amyloplast

Found In: _____

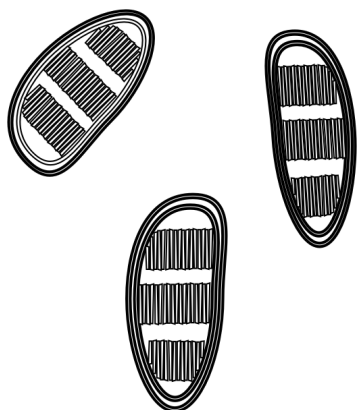
Definition/Function: _____



Cell Wall

Found In: _____

Definition/Function: _____



Chloroplast

Found In: _____

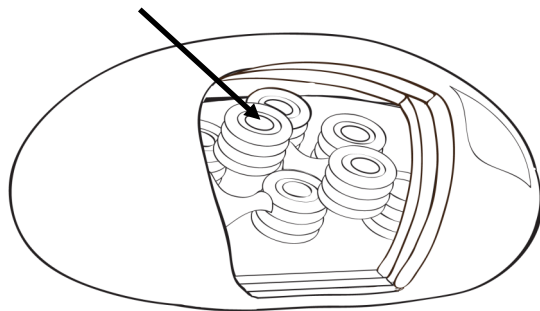
Definition/Function: _____



Druse Crystal

Found In: _____

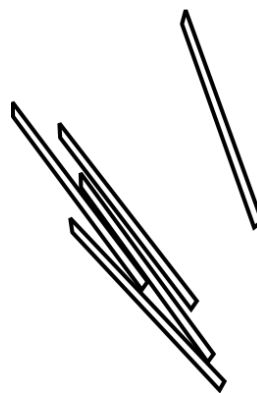
Definition/Function: _____



Granum

Found In: _____

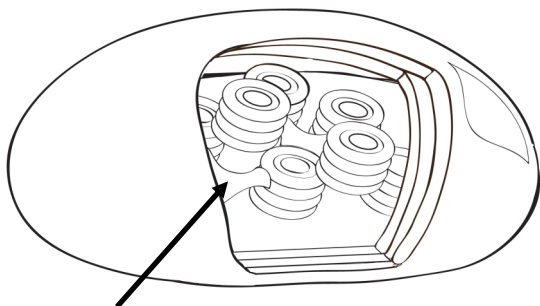
Definition/Function: _____



Raphide Crystal

Found In: _____

Definition/Function: _____



Stroma Lamellae

Found In: _____

Definition/Function: _____
